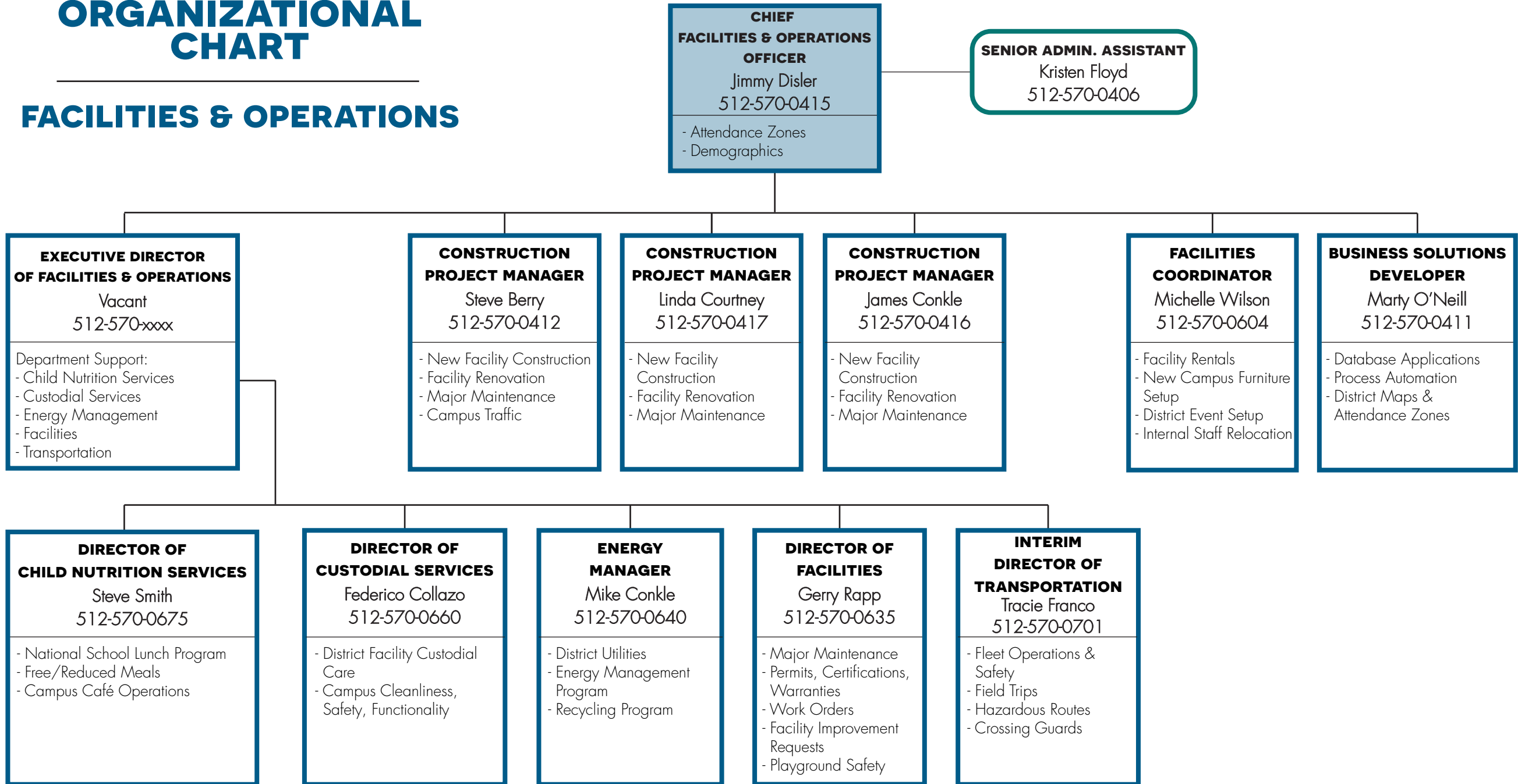


ORGANIZATIONAL CHART

FACILITIES & OPERATIONS



CHIEF FACILITIES & OPERATIONS OFFICER
Jimmy Disler
512-570-0415
- Attendance Zones
- Demographics

SENIOR ADMIN. ASSISTANT
Kristen Floyd
512-570-0406

EXECUTIVE DIRECTOR OF FACILITIES & OPERATIONS
Vacant
512-570-xxxx
Department Support:
- Child Nutrition Services
- Custodial Services
- Energy Management
- Facilities
- Transportation

CONSTRUCTION PROJECT MANAGER
Steve Berry
512-570-0412
- New Facility Construction
- Facility Renovation
- Major Maintenance
- Campus Traffic

CONSTRUCTION PROJECT MANAGER
Linda Courtney
512-570-0417
- New Facility Construction
- Facility Renovation
- Major Maintenance

CONSTRUCTION PROJECT MANAGER
James Conkle
512-570-0416
- New Facility Construction
- Facility Renovation
- Major Maintenance

FACILITIES COORDINATOR
Michelle Wilson
512-570-0604
- Facility Rentals
- New Campus Furniture Setup
- District Event Setup
- Internal Staff Relocation

BUSINESS SOLUTIONS DEVELOPER
Marty O'Neill
512-570-0411
- Database Applications
- Process Automation
- District Maps & Attendance Zones

DIRECTOR OF CHILD NUTRITION SERVICES
Steve Smith
512-570-0675
- National School Lunch Program
- Free/Reduced Meals
- Campus Café Operations

DIRECTOR OF CUSTODIAL SERVICES
Federico Collazo
512-570-0660
- District Facility Custodial Care
- Campus Cleanliness, Safety, Functionality

ENERGY MANAGER
Mike Conkle
512-570-0640
- District Utilities
- Energy Management Program
- Recycling Program

DIRECTOR OF FACILITIES
Gerry Rapp
512-570-0635
- Major Maintenance
- Permits, Certifications, Warranties
- Work Orders
- Facility Improvement Requests
- Playground Safety

INTERIM DIRECTOR OF TRANSPORTATION
Tracie Franco
512-570-0701
- Fleet Operations & Safety
- Field Trips
- Hazardous Routes
- Crossing Guards